

Community Art Auction 2012



MOUNT LAWLEY
SENIOR HIGH SCHOOL



welcome

Welcome to the 2012 Mount Lawley Senior High School Community Art Auction. Now in its ninth year, the Art Auction is our major fundraising event. The funds we raise tonight ensure the students have the opportunity to extend their abilities and be involved in stimulating projects. Proceeds will directly help send students on study and cultural exchange tours. We believe this enrichment will create the next generation of actors, musicians and visual artists.

As committee members and parents of Music and SVAPA students we are excited to bring this event to the community. The Director of the Perth Institute of Contemporary Arts Ms Amy Barrett-Lennard will open tonight's auction. We thank her for her attendance tonight and hope you enjoy the night's festivities.

Thank you to the Principal and Associate Principals, school administration, teaching staff, parent volunteers and students. The MLSHS Community Art Auction is a joint venture between the Music and Specialist Visual and Performing Arts (SVAPA) Support Committees under the auspices of the MLSHS Parents & Citizens Association Inc.

gold level sponsors

The continued success of the MLSHS Community Art Auction relies on the valuable support of our generous sponsors and supporters. So please, consider opportunities to return their goodwill.

auction sponsor

John Cook WA Art Auctions

graphic design sponsor



**Jumping Jigsaws
Photography & Design**

print sponsor



Optima Digital

gold sponsor



**Commercial Driveline
Services**

media sponsor



Community News

catering sponsor



**CATERING
ESSENTIALS**

Catering Essentials

gold sponsor



**Nell Gray Quality Apparel
Manufacturers**

Community Art Auction 2012

proceedings

- 5:00pm** View the artworks
Purchase wine, beer, soft drinks, tea, and coffee from the bar
Enjoy wonderfully tasty (and free) nibbles served by Catering Essentials
Register for bidding
Get an Auction Catalogue for a \$2 donation
Vote for your favourite piece in the People's Choice Award (free entry into a raffle draw)
Bid in the silent auction for some fabulous offerings
Try your luck for some great raffle prizes
Listen to vibrant music from the talented MLSHS music students
- 6:35pm** Master of Ceremonies - Mr. Russell Goodrick
Opening Speaker - Ms. Amy Barrett-Lennard Director of PICA
Principal's Welcome - Mr. Milton Butcher
- 6:55pm** Announcement of People's Choice Award
- 7:00pm** Auction starts
Hammer down at 7:00 pm
Auction Intermission
Drawing of Raffle Prizes Auction
Auction resumes
Results of the Silent Auction Winners
Closing Notes and Thanks.

silver level sponsors



Summit Home Improvements



Transpacific



Mercure Hotel Perth



De Vine Cellars

bronze level supporters

Coode Street Cafe
Essenza Coffee
Hyatt Regency Perth
Helen O'Grady Drama Academy

IGA Mt Hawthorn
Jackson's Restaurant
Lawleys Bakery
Mondo Butchers

Pisconeri Fine Foods and Wines
the little arthouse mt hawthorn
The Rock Inn - Guitar Shop
Stones Pizza

artwork

1. Waiting for Dawn



Sandy Robertson

55x45cm
Watercolour

2. Summer Gold



Janine Cairnes

56x56cm
Watercolour

3. Autumn in Hyde Park



Vincent Elliott

61x71cm
Oil on board

4. Paganini's Ghost



Vivienne Peters

59x75cm
Oil on canvas

5. Longevity



Edward Chin

50x70cm
Chinese Ink on
Paper

6. Black Sun



Marie Brain

39cm diameter
Fused and
Slumped Glass

7. Gum Flowers



Christine Blowfield

76x61cm
Acrylic

8. Graceful Mount Lawley



John Ainsworth

97x78cm
Watercolour

9. Peace



Ileana Rozitis

15x20cm
Silver, gold and
turquoise

10. Denmark Cottages



John Cartwright

73x63cm
Oil

11. Wandering Yongka (Triptych)



David E. Jones

75x36cm
Acrylic

12. Reflective River



Jane Grierson

70x56cm
Pastel

13. Kinetic Abstract



Charles Warren

Variable
Mixed Media

14. Pear Shaped



Keith Hamilton

120x80cm
Oil

15. Dwellingup Drawing 2A



Cynthia Ellis

52x25cm
Pastel on
watercolour
paper

16. Jam Session



Marilyn Boast

61x51cm
Acrylic

artwork

17. Summer Break



Michelle de Bruin

58x47cm
Pastel

19. Not Just White Noise



Chani Crow

56x38cm
Charcoal, pastel
and ink on paper

21. Pilbara Waters



T. Brian Aylward

58x75cm
Pastel

23. Winter Sunset Paris



Peta Zeller

92x61cm
Acrylic oil on
canvas

18. Estuary View



Patricia Hines

90x75cm
Acrylic on canvas

20. Boogie Woogie Man



Charles (Jana)
Benjafield

105x105cm
Charcoal

22. Route No. 25



Felicity Sivewright

76x76cm
Acrylic on canvas

24. Peregrine Falcon



Quinn Hart

Graphite

25. Boats VII



Colleen Rintoul

42x120cm
Acrylic on canvas

26. Blind Willow



Jillian Ciemitis

42x29cm
Digital print

27. Front Profile



Miles Noel

40x70cm
Oil on canvas

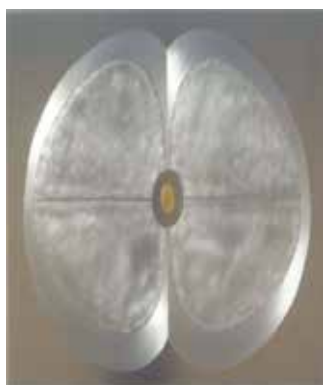
28. Weekend at Longreach



Narelle Manser-Smith

90x60cm
Acrylic

29. A New Beginning



Eve Arnold

80x80x2.5cm
Etched and distressed
aluminium and
24 carat gold leaf

30. Mild Fragrance



Guo Qi (Danny)
Deng

93x98cm
Watercolour

31. Behind the Mask



Cathy Swioklo

63x50cm
Screenprint inks

32. Spirits in the Slipstream



Naomi Grant

90x120cm
Acrylic and collage

artwork

33. Priest of Lalibela



Marion Power

70x86cm
Acrylic

35. Still Life



Yau Chau

1150x910cm
Oil

37. The Peddler Furious



Craig Bush

28x28cm
Photographic
print

39. Autumn Tones I



Mitzi Smith

50x50cm
Mixed media

34. The Garden - Not Made with Hands



Lindy Boyle

101x101cm
Acrylic

36. Bass Baritone Sax I



Martin Kidd

30x60cm
Oil with mixed
medium on wood

38. Love Me Tender



Jane Ryan

60x90cm
Mixed acrylic

40. Bella



Myra Mitchell

92x122cm
Acrylic

41. Mews Road Morning



Nonie Jekabsons

61x51cm
Acrylic on canvas

42. Sea and Sand



Doreen Byrne

50x50cm
Oil and found
material on canvas

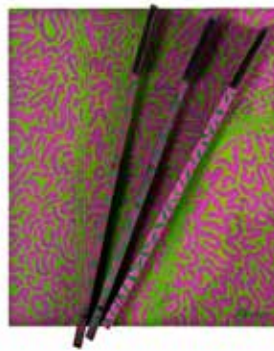
43. Stable Door



Judy Rogers

45x45cm
Mixed media

44. Keywork No. 3



Lesley Meaney

40x40cm
Acrylic piano keys
on board

45. Pond Life with Water Lilies



Aurelie Yeo

80x63cm
Watercolour

46. Abstract



Nereyda Wilson
Rozas

90x60cm
Oils

47. Dawn at Little Meelup



Christine
Blowfield

76x61cm
Acrylic

48. Molten Earth



Deborah Bonar

35x45cm
Acrylic on canvas

artwork

49. Tete-a-Tete



Sandra Henderson

35x51cm
Watercolour

50. Salt Lake



Marie Hammat

68x85cm
Acrylic on canvas

51. North West Australia



Alma Hotchkin

56x46cm
Etching

52. Hand Picked



Keith Hamilton

64x74cm
Oil

53. Study in Tonal Perspective



Lawrence Marshall

60x85cm
Photography

54. Tanami Mapping 2011 III



Pippin Drysdale

18x20cm diameter
Porcelain one-off

55. Tanami Mapping 2010



Pippin Drysdale

32x19cm
diameter
Porcelain one-off

56. Travelling Dark



Peteris Ciemitis

40x30cm
Pen and ink

57. Brushtail Possum



June Olwen
Leonhart

58x48cm
Mixed media

58. Northern Red



Val Brooks

90x60cm
Oil

59. Retropods



Kerrie Di Cataldo

39x47cm
Digital
photography on
aquarel

60. Anchored in the Storm



Ileana Rozitis

15x20cm
Silver, gold, blue
agate

61. Peace II



Peta Zeller

70x70cm
Acrylic oil on
canvas

62. Perth Bell Tower



John D. Bullock

54x69cm
Watercolour

63. Hunters and Gatherers



David E. Jones

61x51cm
Acrylic

64. Tumblin



Myra Mitchell

61x91cm
Acrylic

artwork

65. Ochre Island



Jane Grierson

85x65cm
Pastel

66. Rock of Ages



Linda O'Brien

63x44cm
Acrylic

67. Prayers



Naomi Grant

90x120cm
Acrylic and
collage

68. Pitcher of Blooms



Sunita McWhinney

78x58cm
Mixed media plus
water and pencil

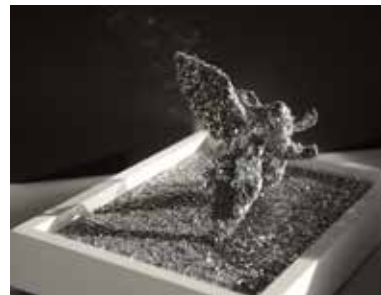
69. Plockton



William (Bill)
Dennis

60x50cm
Acrylic on canvas

70. Pigs Might



Charles Warren

Variable
Mixed media

71. The Jetty



Cathy Josephs

68x52cm
Soft pastel

72. Open Cut



Felicity Sivewright

59x87cm
Acrylic on board

73. Aftermath Hills Fires



Kerrie Di Cataldo

57x41cm
Digital
photograph on
watercolour
paper

74. Keywork No. 5



Lesley Meaney

40x40cm
Acrylic piano keys
and epoxy on
board

75. Flooded Crossing



Alma Hotchkin

76x63cm
Lithograph

76. Meeting Place



Julian Fisher

65x50cm
Oil acrylic

77. The Cut



Linda O'Brien

74x62cm
Acrylic

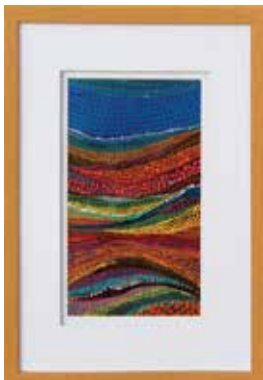
78. North West Oasis



Bernice Wright

57x76cm
Watercolour

79. Heavenly



Deborah Bonar

35x45cm
Acrylic on canvas

80. First Light



Patricia Hines

115x65cm
Acrylic on canvas

artwork

81. Suspended Landscape



Carolyn Griffiths

80x76cm
Mixed and acrylic

82. Dwellingup Drawing 2B



Cynthia Ellis

52x25cm
Pastel on
watercolour paper

83. Bass Baritone Sax II



Martin Kidd

30x60cm
Oil with mixed
medium on wood

84. Mews Road Evening



Nonie Jekabsons

61x51cm
Acrylic on canvas

85. Summer in Hyde Park



Vincent Elliott

78x90cm
Oil on board

86. Historic Mount Lawley



John Ainsworth

97x78cm
Watercolour

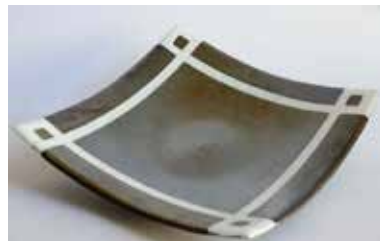
87. Suburban



John Baldock

75x90cm
Acrylic

88. Pewter Perfect



Marie Brain

42x42cm
Fused and
slumped glass

89. Autumn Tones II



Mitzi Smith

50x50cm
Mixed medium

90. Acid Boy



Miles Noel

50x60cm
Oil on canvas

91. Bella I



Jillian Ciemitis

29x42cm
Digital print

92. Tanami Mapping 2011 II



Pippin Drysdale

20x21cm diameter
Porcelain one-off

93. Tanami Mapping 2011 I



Pippin Drysdale

20x13cm
diameter
Porcelain one-off

94. Three Seagulls



John Cartwright

62x51cm
Oil

95. Leaf 1



Stormie Mills

33x33cm
Acrylic and
gouache on
found object

artists

John Ainsworth



John Ainsworth grew up in the wheatbelt town of Corrigin. He has been painting in watercolours since 1995 and has received over 150 awards. John exhibits in over 50 group exhibitions every year.

Eve Arnold



Born in Germany, Eve has lived in Perth since 1975. In 1991 she took up Fine Arts studies at the Claremont School of Art and later at the Western Australian School of Art, Design and Media. She has since held successful exhibitions in Australia, Germany and Italy. Eve's works are often inspired by music. She has staged 7 solo exhibitions of her works and participated in over 60 group shows in Australia, Italy and Germany. For many years watercolour was Eve's preferred art medium. More recently she has explored working in aluminium and copper. She believes that for the artist it is a fascinating process to transform industrial sheets of metal into two-dimensional works of art.

T. Brian Aylward



T. Brian Aylward was born in 1939 at Warnham in West Sussex, UK and studied art part-time at Horsham Art School. He immigrated to Western Australia in 1968 where the light and countryside stimulated and inspired his work. Since 1990, he has been a full-time artist working from his studio at Wooroloo. Brian had appeared in "Australian Artist", has presented many talks and workshops and taught art at TAFE. His art can be found in private and corporate collections around the world.

John Baldock



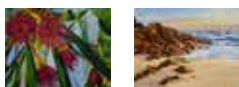
John Baldock is a director of Alpha Studios Incorporated, a private art school which provides courses in creativity. John has held more than 50 exhibitions worldwide. His work has been recognised by Mrs Betty Churcher, retired Director of the Australian National Gallery, with a National Award for Watercolour.

Charles (Jana) Benjafield



Charles Benjafield's primary source of inspiration is the interior landscape. Charles says of his own work, "I don't paint what I see, I paint what I feel, think and imagine. I have no specific style. The visual quality of the work I produce is dependent on the idea or emotion I am trying to express." Charles has exhibited in many local exhibitions and has won awards for his pastels and drawings.

Christine Blowfield



Christine enjoys working in the medium of pastels. She says that 'The ease of which you can capture colour and light with pastels are a benefit to my work. I hope to capture depth and tonal perspective. I also try very hard to portray atmospheric perspective as well.' Christine finds working with pastels both rewarding and enjoyable. Her acrylic works are more stylized than her pastels but still show a different or unusual perspective or colour interpretation. Christine believes portraying the subject accurately and realistically is very important to her work.

Marilyn Boast



Beldon artist Marilyn Boast has exhibited in the MLSHS Community Art Auction six times, always submitting paintings relevant to the music students of the school. She has had many successful exhibitions, has won a number of awards and is a member of both the Wanneroo Art Society and North Coast Art Club.

Deborah Bonar



Deborah Bonar is proficient in many art forms including painting, drawing, digital design, photography and printmaking. She has exhibited widely in WA and has received notable public art commissions including artwork for the foyer of the Fiona Stanley Hospital. Deborah's artwork is inspired by the landscapes, plants and animals of the East Kimberley and Midwest - the heartlands of her Gija and Yamatji heritage. She was a collaborative artist in the Nomad Two Worlds "Portrait of Diversity" Exhibition in 2011, the 2011 recipient of the Cossack Art Award (Indigenous) and a finalist in the 23rd Annual Telstra National Aboriginal and Torres Strait Islander Art Award.

Lindy Boyle



Lindy is inspired by her own emotional response to the beauty of the natural world and its abstract creations. 'I want my paintings to inspire a similar positive emotional response from the viewer.' Her multi layered abstract creations are bold and emotional, abstracting form with rich colour and texture, whilst incorporating collage elements. Lindy has been invited to exhibit in Ferrara Italy in April 2012 in the Trevisan International Art Exhibition 'Liberated Dreams'. This is the third year Lindy has entered the MLSHS Community Art Auction, winning the People's Choice Award in 2011.

Marie Brain



Marie's creative nature first led her to painting, textiles and crafts. Eventually she embraced glass as her preferred medium. She has now been working with glass for five years and still finds it exciting and surprising each time a new piece emerges from the kiln. Marie believes that the vibrancy of the glass inspires to ensure the artist is constantly being challenged to give life to their concepts.

Val Brooks



Born in the UK, Val is constantly inspired by the quality of light and amazing colours of Australia. She worked in primary schools for many years as an art educator and is now running workshops and classes for adults. Originally a ceramicist, Val began painting in pastels 12 years ago and more recently in oils. Her style is impressionistic rather than realist. Val aims to recreate the emotional feel of a place in her work.

John D Bullock



John D. Bullock is a member of the Watercolour Society of Western Australia and has regularly exhibited in their annual exhibitions. He has also exhibited at the City of Melville Annual Art Exhibition and the Atwell Gallery. John has been a keen watercolourist for 10 years and has been interested in ink sketching for 40 years.

Craig Bush



Craig has a background in graphic design and has been a photographer for over twenty years. These talents coupled with being an avid observer of all that surrounds him has resulted in his gaining a growing reputation for being the creator of beautiful and thought provoking works. Craig exhibited with six other artists earlier this year, in the FotoFreo Festival of Photography and is currently preparing a major joint photographic exhibition in conjunction with two other artists on the life and culture of the People of Manila.

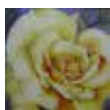
Doreen Byrne



Doreen Byrne's painting and 3D sculptural forms are inspired by the Australian landscape, both coastal and inland areas. While based on reality, her paintings and ceramic forms are her perception of a place, the visual, the feelings and the memories. Born in Onslow, Doreen has never lost her love for the vast open spaces of the northern and inland areas of WA. Her works are represented in public, corporate and private collections in WA and Melbourne.

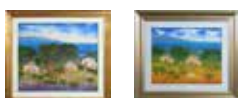
artists

Janine Cairnes



Janine is a self-taught artist who took up watercolour painting after retirement. She has participated in many workshops in Australia and overseas and has been the recipient of several awards. Janine has participated in several joint exhibitions and has had three solo exhibitions. Her favourite subjects include seascapes, birds, South West landscapes and old European buildings. Janine's vibrant works are held in Australian and overseas collections.

John Cartwright



Mount Lawley artist, John Cartwright was born in Leeds, England in 1950. He immigrated to Australia with his family as a child and settled in Western Australia. John is a self-taught artist, with an individualist approach to his art. He began painting full-time in the mid-1970s and has exhibited in every Australian capital city with critical acclaim. His subject matter is predominantly the landscape of the South West of WA, with emphasis on houses, abandoned cartwheels, farm animals and bush land. John is a spiritual person, his paintings can be seen as representing man's earthly tenuous hold, symbolised by twisting pathways and with trees holding to the earth, reaching up through life's journey to the celestial.

Yau Chau



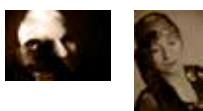
Yau Chau was born in Guangdong, China in 1968. From a young age he studied oil painting with famous masters in Hong Kong. He has had his own painting exhibitions in Taiwan, Hong Kong and Shenzhen. In 2006, Yau won an award of excellence in "Cathay Harmony Ode" an exhibition of Words, Chinese Calligraphy and Painting. He is the new owner of City Lane Art Gallery, specialising in mounting and framing of traditional Chinese paintings, oil paintings, watercolours and more. Yau is a Vice Chairman of the Western Australian Oriental Culture and Art Association.

Edward Chin



Edward Chin has been practising Chinese calligraphy for a long time. He has taught Chinese calligraphy at the Confucius Institute at UWA and Chung Wah Association in Perth.

Jillian Ciemitis



Jillian Ciemitis is a practicing photographic artist. She has held solo and numerous group exhibitions in New South Wales, Victoria and WA, receiving considerable recognition and awards. Her works are held in public collections locally and internationally. Jillian's work favours studio based emotive and intuitive photography which draws from a diverse grounding as a printmaker as well as a creative and commercial photographer.

Peteris Ciemitis



Inspired by ideas of presence, absence and ephemerality, Ciemitis' work is held in the National Collection of the National Portrait Gallery and across many public, corporate and overseas collections. Peteris was winner of the 2010 Black Swan Prize, as well as the Cossack, South Perth, Swan and Vincent Prizes. He has been a finalist in the Archibald Prize twice and short listed for the Prospect Prize.

Chani Crow



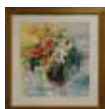
Chani Crow has been a practising artist and arts worker since 1992. She has worked in a number of fields, including community development, mental health and community arts. Chani has a strong background in the production of large scale murals and has been commissioned by organisations such as the City of Vincent, East Perth Redevelopment Authority, Armadale Hospital and a number of Western Australian Primary Schools. Chani is currently the Arts Specialist at Highgate Primary School, where she remains in awe of the creativity and imagination of her students.

Michelle de Bruin



Michelle was born in South Africa, and moved to Perth in 2006. She studied education and specialised in fine art. Michelle has always had an interest in art. Her preferred medium was once watercolour until seeing a brilliant pastel demonstration at ACAS, which inspired her to try pastels. She has not looked back. Michelle believes that the immediacy of pastel as a medium and the urgency one has when working, suits her personal style. Michelle only started painting seascapes when she moved to Perth. She is drawn to the oceans calm, restful and tranquil scenes.

Guo Qi (Danny) Deng



Danny Deng is originally from China and currently President of the WA Oriental Culture and Art Association Inc. Danny held a solo exhibition in the Bankwest Tower in 1996. In 2002, the Perth Mint launched limited edition gold coins for the Lunar Year of the Horse. Danny produced 100 Chinese paintings of horses to accompany the gold coin sets. His work 'Flower Heaven' won first prize in the Australian Arts Magazine Art Prize Challenge in 2008.

William (Bill) Dennis



Born in England, Bill moved to Australia in 1982. He didn't start to paint until retiring at the end of 2009. He now paints anything that takes his fancy as long as it challenges him in some way.

Kerrie Di Cataldo



Winner of the current York Photographic Award - Creative (April 2012), Kerrie Di Cataldo is interested in all facets of the photographic medium, from darkroom to digital. Winner of two other photographic awards, holder of an Associate Diploma of Arts (photographic major) and former TAFE lecturer, she has recently exhibited work in a Melbourne gallery. Kerrie is represented in both private and public collections including the Central TAFE Art and Design Department, the City of Vincent, Mount Lawley SHS and the Holmes a' Court Collection.

Pippin Drysdale



Internationally acclaimed Fremantle Artist and Master of Australian Craft, Pippin Drysdale's career as a ceramic artist spans 30 years. Her passion for the craft merges with a love of the landscape. In more recent years she has focussed on the vivid desert landscapes of Australia. Her works evoke a timeless and breathtaking sense of space and place within finely crafted porcelain vessels, narrating the mesmerising vastness of colour experienced in the unique Australian landscape. Pippin's works are included in major public and private collections around Australia and overseas. She is currently preparing works to exhibit in London and the Netherlands later in 2012.

Vincent Elliott



After graduating from the Advanced Diploma of Environmental Art & Design Swan TAFE, Vincent has for 11 years, exhibited and sold art of varying genres and mediums to a local, national and international audience.

Cynthia Ellis



Cynthia has been a professional artist for more than twenty years painting primarily in oils. In 2002 she graduated from UWA with a Bachelor of Fine Arts. Cynthia has conducted numerous artist residencies (including a residency in China) and participated in solo and group shows throughout Australia. Her work has become popular with serious collectors who are interested in her thickly painted surfaces. The most recent of her achievements being private commissions for large scale paintings for building foyers located in Mounts Bay Road and St George's Terrace.

artists

Julian Fisher



Julian Fisher was born and educated in South Africa where he attained a Bachelor of Architecture degree in 1955. He practiced in South Africa from that date and began a parallel career as an artist from 1965, participating in exhibitions soon after. Julian immigrated to Australia in 1988 and continues to exhibit nationally and internationally. His work interprets subject and object within, creating orchestrations of form, colour and integrity. He employs depth and vision in his unique semi-abstract and expressionistic style.

Naomi Grant



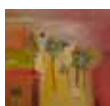
Naomi is a Contemporary Indigenous Australian Artist and a descendant of the Wiradjuri people of central New South Wales. She was born in Sydney but has made her home in Perth for the past 30 years. Naomi has had a successful 29-year career as a practicing artist and designer. She holds a Bachelor of Arts in Design from Curtin University. Naomi's indigenous heritage brings a blend of the contemporary and mysterious together in many of her works. Bold colour and beauty are strong inspirational elements that help her mould each painting. Often these ideas spring from dreams, visions and memories of her travels. Naomi is equally comfortable with traditional scenes, through to a more contemporary blending of realism and Indigenous imagery. In the last 8 years Naomi's focus has been in acrylics and collage. She has developed a technique of using layers of coloured tissue paper under and over the painted surface.

Jane Grierson



Jane was born in South Africa and immigrated to Australia in 1998. She qualified as a Graphic Designer in 1981 and has worked in many areas since then, including screen printing, computer-aided design, ostrich egg illustration and pre-primary education. She now concentrates on her art, working primarily in pastels, depicting the inner life of the city and its environs.

Carolyn Griffiths



Carolyn Griffiths is an emerging contemporary painter who lives and works from her home in Maylands. Although only commencing painting in this style in 2005, she has had a long involvement in many aspects of performance and visual art. Carolyn has worked collaboratively on many multi-arts community and professional projects with both artists and musicians. In February 2012, she conducted her tenth solo exhibition at the David Giles Gallery in Fremantle.

Keith Hamilton



Keith has been successfully painting for a number of years and has had great success in numerous exhibitions. He has been recognised for his skilful use of tone and colour in his paintings of florals, still life and landscapes. Keith has been published in the Australian Artist Magazine and is a past Vice President of the Western Australian Society of Art.

Marie Hammat



Marie Hammat currently works as a visual arts teacher. She has participated in group and community art exhibitions and successfully contributed to a range of sculptural exhibitions. Marie says her work is about the relationship she has with the Australian landscape, vast skies, vivid colours and endless beauty. Her work is not a direct rendering of a place, but a reaction and evocation of how she feels and relates to an area, an explanation or a question of how we see our environment.

Quinn Hart



Quinn Hart is a young, up and coming artist from the US who now calls Perth home. Passionate about wildlife and its conservation, his works often depicts threatened or endangered animals. A self-taught artist, Quinn works primarily with graphite in order to focus on the natural beauty of shape and form.

Sandra Henderson



Retirement from teaching Art and English in secondary schools liberated Sandra to develop her own creative skills. Sandra has exhibited widely and won several awards. Although well known for her floral works, she has recently begun to paint birds and animals with her “pet portraits” gaining increasing popularity.

Patricia Hines



Printmaker Patricia Hines lives in the Peel Region of WA. Passionate about printing, Patricia uses pattern and texture at times complicated and intense, or simple and reflective in her works. Her images evolve from the environmental experiences and stimuli of the landscape surrounding her home; the burnt trunks of the Marri, the raw energy of the ‘katabatic easterlies’, the still evenings of the waxing gibbous moon or the first stars rising. She prints on canvas, timber and clear acrylic, embellishing and using mixed media. She loves the element of surprise when the print plate is lifted and the landscape of her art reveals itself in layers significant to the work. Website: www.patriciahines.com

Alma Hotchkin



Alma trained in commercial art at RMIT and worked in display in Melbourne. She holds Diplomas in Art Studies and Printmaking. Alma has had numerous solo exhibitions and regularly participates in fund raising exhibitions. In 2011 she won the printmaking prize at the Beverley Annual Art Purchase Exhibition.

Nonie Jekabsons



Perth born artist Nonie Jekabsons graduated from Central TAFE with a diploma of Art and Design (Fine Art) in 1992. She has been involved in numerous group exhibitions, most recently winning the open category of the 2012 Town of Bassendean “Trunk Art”. Insatiably creative, Nonie works with a range of media including writing, photography, music and 3D installation. The primary thematic focus of Nonie’s art has always been the interaction between humans and our environment.

David E. Jones



Award winning indigenous artist David E. Jones is currently studying for an Associate Degree in Visual Art and Craft in Visual Culture.

Cathy Josephs



Cathy is attracted to the fragile beauty of our environment and strives to capture the beauty and movement of water and light in her drawings. Her work has won various awards at the Cockburn Community and Cultural Council, Liddelow Homestead exhibitions and the Kelmscott and Canning Shows. Cathy’s work has been regularly purchased both privately and through exhibitions such as the Armadale Society of Artists Exhibitions, Cossack Art Award, IGA Perth Royal Show Open Art Exhibition and St. Brigid’s College Annual Art Exhibition.

Martin Kidd



Martin lectured in Fine Art at Claremont School of Art and Central School of Art for 17 years and has exhibited in many galleries in Perth, both in solo and group shows. In 1994 he moved to the Costa Del Sol in Southern Spain where he exhibited in several galleries. Returning to Perth in 2004, Martin has continued to paint. His works are represented in several local and overseas galleries.

artists

June Olwen Leonhardt



June graduated with a Diploma in Art and Design from the Balga College of TAFE in 1993. In 1989 she had been awarded the TAFE staff prize for best student in Art History. She has been a member of the Bayswater Art Society since 1996 and is a founding member of the Ellis House group. June has won numerous awards in the Bayswater Art Society's Golden Palette award between 1996 and 2002, taking out first prize from 2007 to 2010. She has exhibited and sold paintings at the Mundaring Arts Centre, MLSHS Community Art Auction, the City of Bayswater Art Awards and Exhibition and the City of Swan Art Awards.

Narelle Manser-Smith



Narelle is a multi award-winning artist with a background in education. Teaching for 13 years in the pre-primary classroom, has allowed her plenty of time to experiment with large scale murals whilst encouraging children to express themselves through colour, line, texture and form. Her hands-on approach to exploring a variety of mediums has led her to use various techniques within each piece of work. Narelle loves to observe nature's design in everyday objects, exploring the complexities of texture, light, shade and reflection. Narelle exhibits extensively throughout WA and Melbourne. Her work features in both corporate and private collections across the country.

Lawrence Marshall



Lawrence has been taking photographs since 1976 and has worked as a freelance photographer, producing pictures for newspapers, calendars, book and record covers. He is currently working on a book of photographs with an Australiana theme. He also teaches photography privately.

Sunita McWhinney



Sunita grew up in an artistic household and moved with her own family to WA in 2005. She is a hard working mother of two and a kindergarten teacher. Despite her busy life, she still manages to nurture a passion for art. Her passion has led her to explore a variety of media. With the dedication of a budding artist she has muses her recent work "Pitcher of Blooms". This piece has been selected from her recent expressions with watercolour, gouache, pastels, pencil and ink.

Lesley Meaney



Artist, teacher, curator and writer - Lesley Meaney trained in London and arrived in Australia in 1969. From 1973-1983 she was head of Art at the Fremantle College of TAFE and Art coordinator at the Karratha College of TAFE. Lesley has had 21 solo exhibitions as well as numerous group shows nationally and internationally. She is represented in many public and private collections, has won a number of prizes and awards and is in the top echelon of WA artists.

Stormie Mills



Motivated by the notion of isolation and loneliness, Stormie Mills' work depicts the human condition and the constant struggle to find personal identity within society's confines. Stormie's career as a visual artist has taken him around the world. He has been invited to the prestigious Miami Art Basel three times; created murals across Greece for the Athens Olympics; and has produced large scale commissions and exhibitions in Barcelona, Greece, London, Los Angeles, Miami, Tokyo, Melbourne and Sydney. In 2010, he was invited to take part in the "On The Wall" Exhibition in Melbourne, exhibiting his work alongside the world's leading street artists including Banksy.

Myra Mitchell



Myra began painting after designing and making jewellery for 10 years. It was a natural transition for her as she had been on a progressive journey. When she picked up the paintbrush she knew this was what she was looking for. She paints with the palette, knife and brush, uses earthy tones and vibrant colours. Her preferred medium is acrylic and her style is contemporary.

Miles Noel



Miles produces work in the creative disciplines of painting, photography and graphic design. His graphic design practice has influenced the vibrant colour and bold compositions of his paintings. He has travelled widely overseas and is particularly drawn to remnants of colonialism. Photos, drawings and objects collected along the way serve as the basis of his artworks. Miles also finds much inspiration in his local environs, particularly Western Australia's beautiful coastline. Friends and acquaintances with a certain indescribable quality inspire his painted and photographic portraits.

Linda O'Brien



Enthusiastic pastelist, Linda O'Brien has begun branching out into acrylic and oil on canvas. Over the last twelve years, she has realised seven solo exhibitions together with many joint exhibitions. Linda is a regular exhibitor having numerous successes in both sales and awards (more than 140 major awards) at prestigious local and country exhibitions. Her works are held in private collections both nationally and internationally, as well as in public collections within WA.

Vivienne Peters



Vivienne graduated from the Claremont School of Art in 1984. From 1987 to 1994 she lectured in Fine Art at TAFE while painting and exhibiting her own work. From 1994 to 2004 Vivienne lived in Spain working as an artist and musician. During this time she had solo exhibitions in Spain, Holland and Amsterdam as well as participating in mixed exhibitions. Since returning to Australia she has been exhibiting regularly. Being a musician, Vivienne is very aware of the correlation between music and painting. Both art forms set moods by conveying abstract values of colour, composition, light and movement.

Marion Power



From an early age Marion enjoyed drawing and painting. At college, it was a new challenge to work with clay, producing organic forms based on nature. Later this interest was rekindled, however a recurring wrist injury caused her to change focus to drawing and painting. Along with other core elements of design and art history, it is this consolidated art knowledge that influences her artwork.

Colleen Rintoul



Colleen enjoys experimenting and developing her work in both traditional and more abstract styles using a wide variety of media. Drawing plays an important role in her work. Her early training took place at Claremont Training College, where she specialised in art and music at UWA. Colleen has successfully combined her love of theatre and painting by creating backdrops and works for many productions including musicals and ballet. Since retiring, her main interests have centred around her own artistic development and in helping to foster arts in the community. She is an active member of both the Alfred Cove Art Society and the Melville Community Arts Association at the Atwell Art Centre where she has been the Curator for a number of years.

artists

Sandy Robertson



Sandy has a recognisable style of watercolour painting which embraces the true watercolour look while at the same time being colourful and contemporary. Her painting career has included painting and teaching in local, interstate and overseas venues and winning numerous awards for watercolour in WA. Her subjects include landscapes, beach scenes, buildings, cityscapes and flowers. Many of these subjects are painted on-location, using an easel in an almost vertical position to let the paint and water flow freely, which contributes to her relaxed style. In 2006 she, along with fellow artist Shirley Winstanley, were resident artists in Bivongi, Italy.

Judy Rogers



Judy has gained the attention of art award judges, fellow artists and audiences for her classical treatment and meticulous technical execution of contemporary portraits and figurative work. Her works are insightful, refreshingly tender and personal. This year she was included in the "Stations of the Cross Exhibition"; she won the Highly Commended Corporate Award at the Manjar Art Award 2012; and was the winner of the Town of Mosman Park Art Award in 2011. She works at the Tresillian Centre in Nedlands.

Ileana Rozitis



Ileana has been creating with silver for over 20 years, having initially studied art and design at the South West College of TAFE. Her initial focus was crafting artistic, yet wearable silver jewellery. After a number of years of exhibiting and selling her work, she operated her own craft gallery in Fremantle and then London Court for 8 years. She now enjoys the freedom of working from a home studio where her focus has shifted from jewellery to making small, framed silver pictures that tell a story. Ileana's inspiration is nature and relationships, and the joy and beauty they can bring.

Jane Ryan



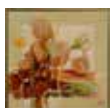
'It's nice, it's different, it's unusual.' words immortalised by 'Kath and Kim' are the essence of Jane's creativity. Her journey began 13 years ago as the 'Funky Lady' created mosaics, ceramics and sculptures exclusively for a local award-winning nursery. A desire to broaden her creativity led her to acrylic painting four years ago. This has seen her exhibit in joint exhibitions, local art competitions and for the fourth year, support her old high school in this annual event!

Felicity Sivewright



Carnarvon born Felicity Sivewright studied both Design and Fine Arts (with Honours) at Curtin University. She has exhibited regularly in WA and interstate for many years and is the recipient of numerous art awards. Felicity is represented in a growing number of public and private collections throughout Australia including Artbank. She is mostly known for her intricate and detailed organic pattern paintings and has recently started to incorporate hard edged abstraction into her work in response to WA's current mining boom.

Mitzi Smith



Multi award winning artist Mitzi Smith has a Diploma of Art from the Royal Melbourne Technical College. She completed postgraduate studies in London and Canada, and studio studies with Perth Art College. Mitzi has made a career in advertising, illustration and art production. The last decade has seen her concentrating on fine arts and ceramics. She has had four solo exhibitions and many combined exhibitions.

Cathy Swioklo



Cathy is a figurative sculptor working mostly in ceramics and mixed media. Her work is inspired by the human condition and explores themes of isolation, immigration and loss and re-establishment. She has a preference for working in recycled wood, metal or any materials that evoke memory or have a history. Cathy has tertiary qualifications in Applied Environmental Art and Arts Fashion. She has recently conducted solo exhibitions at the Midland Junction Arts Centre and Emerge Art Space.

Charles Warren



Charles Warren studied art and teaching at Curtin University and is currently working as an art teacher.

Nereyda Wilson Rozas



Nereyda studied visual art at University in Peru for 5 years. During this time she had numerous exhibitions. Nereyda moved to Australia and continued painting and exhibiting. She has produced work for many exhibitions including the Latin American Cultural Association, City of Nedlands (Tresillian Centre), the Darlington Arts Festival and the Midland Arts Festival. Nereyda works in a broad range of mediums including, ceramic, printing, oil painting, watercolour, pencil and artistic craft. She specialises in natural themes, painting rural and urban landscapes. She also enjoys contemporary art.

Bernice Wright



Bernice is well known for her land and seascapes, painting both in realistic and abstract styles. She began her art career working in oils but now paints almost exclusively in watercolours and mixed media. Bernice has exhibited in many group shows and won art awards all over WA. Her work is represented in private collections and corporate collections locally and overseas. Bernice belongs to the Watercolour Society of Western Australia where she has held the position of Vice President for five years.

Aurelie Yeo



Well-known Perth artist Aurelie Yeo has travelled throughout WA, the Northern Territory and as far afield as Antarctica to gain inspiration for her work. Through her diversity of approach and subtle handling of subject matter, she draws inspiration from the many moods of the landscape. Her visual responses reflect a sensitivity and concern for the fragile nature of the Australian environment. Aurelie has held 21 solo exhibitions and exhibited in over 100 mixed exhibitions. A significant part of her work is in portraiture ranging from quick sketches through to studied works in oils.

Peta Zeller



Peta was born in 1965 in Mt Barker, Western Australia, and now resides in Perth. She began painting at a mature age after loving drawing most of her life. Peta's paintings are from the heart and things that move her. In October 2009, Peta was involved in a combined exhibition at Atwell Gallery and in January 2010 won the Peoples' Choice at the Animal Art Award. Peta is represented by a growing number of private collections state wide and in the United Kingdom.

silent auction



Raffles Hotel
acrylic on canvas
kindly donated by Ali Ross
www.aliross.net.au



Inheritance
acrylic on canvas
kindly donated by
Nonie Jekabsons



Inspired by Hundertwasser
ceramic bowl
kindly donated
by Milton Cocks

In addition to the artworks available in the Community Art Auction, we are running a Silent Auction of selected artworks, mini artworks by our Year 11 students and other fantastic donated items.

These include:

- Hyatt Regency - Dinner for four people
- Mercure Hotel - Overnight accommodation for two people
- Jackson's Restaurant – Dinner to the value of \$200
- Transpacific – A skip bin to the value of \$500
- Nell Gray Quality Apparel & Suppliers to Schools - Four vouchers to the value of \$250 each
- Mondo Butchers - Products to the value of \$100 or a cooking class
- Helen O'Grady - Drama classes for kids- one term's tuition
- The little arthouse - Art classes for kids- one term's tuition
- Beautiful Hampers from De Vine Cellars and Pisconeri Fine Food & Wine Wholesalers

To bid, simply place your written bid amount with your name and telephone number on any of the Silent Auction items located near the entrance.

Check back at any time before the end of the Art Auction intermission to continue bidding on that item. The highest/successful bidder will be announced after item 75 in the Art Auction.

You must be present to collect your Silent Auction item, or it will be passed to the next highest bid.

people's choice award

Do you have a favourite piece of artwork in the Auction?

Please, go ahead and vote for it!

Every vote goes in a draw for a prize.

Before you enter the Auction room, simply write the artwork lot number on your voting slip and place it in the box provided.

The winning artist and the lucky draw winner will be announced at 6.55pm, just before the Auction begins.

conditions of sale

- You must complete a bidder's registration card to participate in the auction.
- Payment is by Credit Card (Visa or MasterCard only), Debit Card, Cash or Cheque.
- Cheques to be payable to: Mt Lawley SHS Parents & Citizens Association, Inc.
- Unless by prior arrangement, cheques will not be considered as payment until cleared.
- A non-refundable deposit of 10% of the purchase price or \$50.00, whichever is greater, is payable on the auction night.
- The balance will be payable on pick-up of the purchased item.
- On the auction night, purchased items can be taken immediately once paid in full.
- Otherwise works will be available from the MLSHS Senior School Building on either Thursday 21 or Friday 22 June 2012 between 3.30 - 5.00 pm.
- Please bring photo identification.



MOUNT LAWLEY SENIOR HIGH SCHOOL
PARENTS AND CITIZENS ASSOCIATION INC
WWW.LAWLEYEVENTS.COM

proudly sponsored by

John Cook WA Art Auctions



Jumping Jigsaws
Photography & Design



Community News



Optima Digital



CATERING
ESSENTIALS

Catering Essentials



Commercial Driveline
Services



Nell Gray Quality Apparel
Manufacturers